



# Barrow Sea Ice Radar Offline Maps

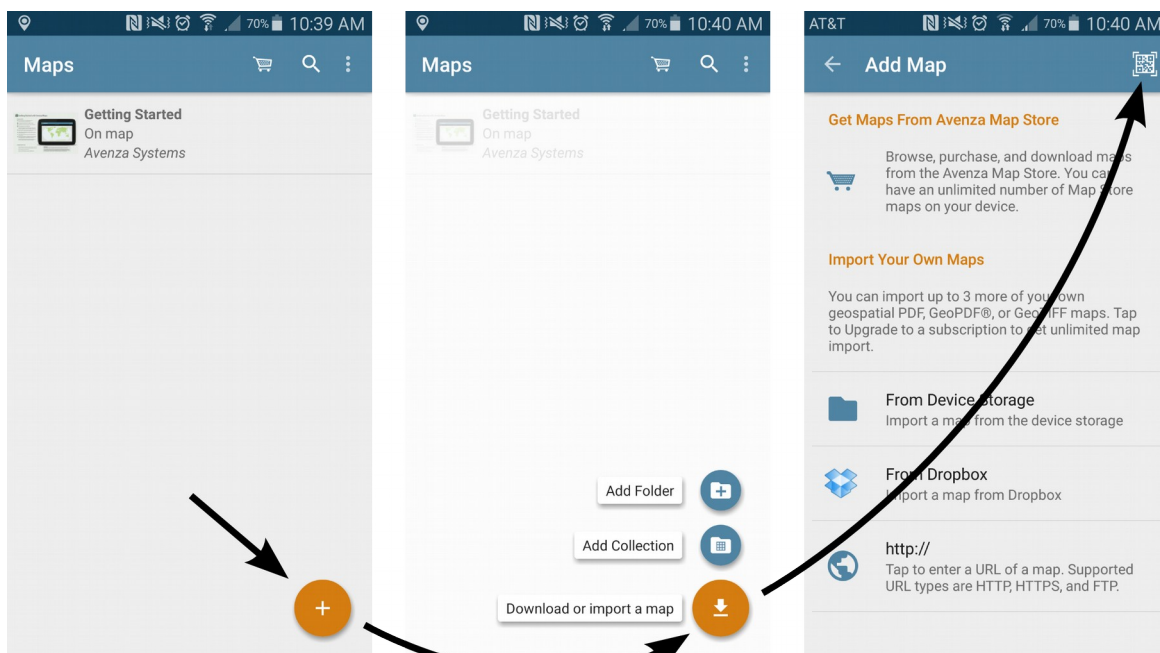
## Alaska Arctic Observatory and Knowledge Hub

The following steps will guide you through the process of using Avenza Maps to download current Barrow sea ice radar imagery to your mobile device to use as a map. After the imagery has been downloaded, Avenza Maps will be able to locate your GPS coordinates on the map even when Internet and cell phone service are unavailable.

1. Install the Avenza Maps app on your mobile device. You can either search for this app in the App Store (iPhone), Google Play Store (Android), Microsoft Store (Windows Phone), or scan the QR code to the right.



2. Open the Avenza Maps app. It will ask you to sign up for an account and repeatedly prompt you to “Upgrade to Pro,” but none of this is required. You can simply close these windows. The free version of the app allows you to keep up to three maps on your device simultaneously.
3. Click the “+” button at the bottom-right of the screen, then choose “From QR Code” and scan one of the QR codes on the other side of this document.





**Current**



**30 minutes ago**



**1 hour ago**